



BIGHORN BASIN FIRESMART



BIGHORN BASIN FIREWISE COMMUNITIES

ISSUE #18 — SPRING 2015

2015 FIRE SEASON PREDICTION

Early predictions are that the 2015 fire season in Wyoming will be similar to the 2012 season which set records and threatened numerous Wildland Urban Interface (WUI) communities. Spring fires have already happened in Bighorn Basin neighborhoods. WUI residents are reminded to get an early start on reviewing preparedness checklists (Page 7), and doing preseason *Firewise* maintenance around their homes and cabins.

FIREWISE COMMUNITY UPDATE

Both the West Tensleep Cabin Owner's group and Canyon Creek Village have been approved as a Firewise Communities!



THE BIGHORN BASIN HAS A NEW DISTRICT FORESTER

Paul Morency has retired, and the new District Three (Riverton office) Wyoming State Division of Forestry District Forester is Josh Stroyer. Josh came to us from the Missouri Department of Conservation, where he had over 18 years of experience. Before his departure for Wyoming, he was a Resource Forester (similar to our District Forester), had been a regional inspecting forester for the Tree Farm Program for the last five years, and has a solid fire background. His qualifications include: Task Force Leader, and Type III IC trainee. Josh is a member of the Society of American Foresters (SAF), and is a Certified Forester under SAF's program. Please join Big Horn and Washakie Firewise in welcoming Josh to Wyoming and the Wyoming State Forestry Division.

TENSLEEP FIRE STATION UPDATE

Chris Kocher, Washakie County Fire Warden, reports that the floor has been poured for the new fire hall; a 5-ton Type 4 engine, an FEPP engine and a structure truck (from Dubois) have all been secured; and a new Type 6 engine will be purchased. Old Engine 8 from Worland will be sent to Canyon Creek Country, where the Community Hall is being classified as a fire station.

MOUNTAIN CABIN-OWNER PICNICS - Due to non-renewal of the State funding for Big Horn County Firewise, only one Mountain Cabin Owners Picnic is scheduled for 2015. This one will be in the south end of the Big-horns, and include mountain residents from both Big Horn and Washakie counties. Page 6 has details.

<u><i>In this issue</i></u>	<u><i>Page</i></u>	<u><i>Special points of interest</i></u>
Updates	1	* Updates & Firewise Communities
Firewise Coordinators	2	* The new basin Firewise website
Windows and Firewise	3	* Making windows Firewise
Little Things that Matter	4	* Important little Firewise items
Old Maid Gulch Fuels Project	5	* Project completion report
Mountain Cabin-owner Picnic	6	* Where and when
Firewise Preseason Checklist	7	* Fire activity websites
More Little Things that Matter	8	* Bighorn Basin Firewise Facebook

THE BIG HORN BASIN FIREWISE COORDINATORS ARE:

Big Horn County: The County Fire Warden is Brent Godfrey (307) 568-2324. The Firewise Coordinator is Chris Weydeveld, cweydeveld@wytfs.com, Technical Forestry Services, LLC, 6628 W. Riverside Dr. Casper, Wyoming 82604, or (307) 333-1098 (office), (307) 272-9533 (mobile).

Washakie County: Chris Kocher, Fire Warden, ckocher@worlandfire.org, P.O. Box 504, Worland, Wyoming 82401, or (307) 347-6379. The Firewise Coordinator is Chris Weydeveld, cweydeveld@wytfs.com, Technical Forestry Services, LLC, 6628 W. Riverside Dr. Casper, Wyoming 82604, or (307) 333-1098 (office), (307) 272-9533 (mobile).

Hot Springs County: No Firewise Coordinator has yet been selected. Contact Jay Duvall, County Fire Warden, at (307) 921-1485, or hscdwarden@gmail.com

Park County : Bernie Spanogle, Firewise Coordinator, can be reached at pcfirerwise@gmail.com. or at 307-250-9387. The County Fire Warden is Russ Wenke, rwenke@parkcounty.us, 1131 11th Street, Cody, Wyoming 82414, or (307) 527-8551.

The basin Firewise website has been updated! Pcfirerwise.com - Contact Park County Firewise.

When you get there, click on "Park County Firewise" to get the menu. Check it out.

If you have general or specific questions about Firewise, two good online sources of answers are: www.firewisewyoming.com and www.livingwithfire.com.

Do you have topics you would like included in future newsletters? Please submit your suggestions and comments to firewise@wytfs.com, or by mail to G. Wynn, 824 Country Club, Casper, Wyoming 82609.

Thanks for providing this newsletter go to the Wyoming State Forestry Division, the Big Horn and Washakie County Fire Wardens, and the U.S. Forest Service. They provide the funding.

This newsletter is provided as a service of your county's Firewise Coordinator. If you choose not to receive future issues, please respond to firewise@wytfs.com, or to Big Horn/Washakie Firewise (6628 W. Riverside Drive, Casper, Wyoming 82604) by mail.



The *Wyoming Tree Owner's Manual* is a guide for tree care information and guidance, and covers a wide range of topics including: selecting the proper tree, planting, pruning, how to hire an arborist, and tree removal, to name a few. The USDA Forest Service produced the original guide. With their permission, the Wyoming State Forestry Division made several minor revisions and additions to customize the manual to Wyoming. It is available at Wyoming State Forestry Division offices, or at wyo.gov/community-forestry/educational-technical-resources/education

WINDOWS AND FIREWISE

This information comes from the Insurance Institute for Business & Home Safety, and other sources.

Depending on the type of glass, a window that is exposed to flames may break after only 1 to 3 minutes of exposure to intense heat or flames, and allow flames and embers inside. Glass in windows breaks because of extreme temperature differences between the exposed glass and the glass protected by the window framing material, when exposed to the heat from a wildfire (or the heat from your neighbor's burning home). Very seldom do windows actually melt because of fire outside the home/cabin.

Testing has shown that single-pane windows are highly vulnerable to breaking when exposed to wildfire conditions. Dual-pane windows have two sheets of glass that are separated by airspace, and are much less subject to heat-related breakage.

Cracks develop and propagate inward, which makes larger windows more vulnerable to breaking because they tend to have more edge than smaller windows.

Improving window performance

Replace single-pane windows with dual-pane, tempered glass:

This will provide significant wildfire protection against flames and wind-blown embers.

These windows have the added benefits of greater energy conservation and insulation during cooler and warmer months.

The cost increases are relative to the opening size and the number of windows that must be replaced.

Tempered glass in a window will have a marking etched on one of the lower corners.

Remember, even dual-pane, tempered glass windows will not protect your house if they are left open. Close all windows before you evacuate during a wildfire.

Install window screens

Metal window screens have been shown to improve the performance of windows subjected to radiant heat exposure in wildfire conditions.

Metal screens of no larger than 1/16-inch mesh will also help to resist the entry of embers, but will not keep flames out.

Shutters may be a less expensive option to window screens or dual-pane windows.

Shutters should be a minimum of ½-inch plywood, tightly fit to the window opening, and be coated with paint or other sealer.

Shutters work best if labeled for each window, with pre-installed anchorage hardware so they can be quickly installed when wildfire threatens, or when closing up a seasonal home for winter.

More details on windows, screens, and shutters can be found at

<http://www.disastersafety.org/wildfire/windows/>

A PAGE OF “LITTLE THINGS THAT MATTER”

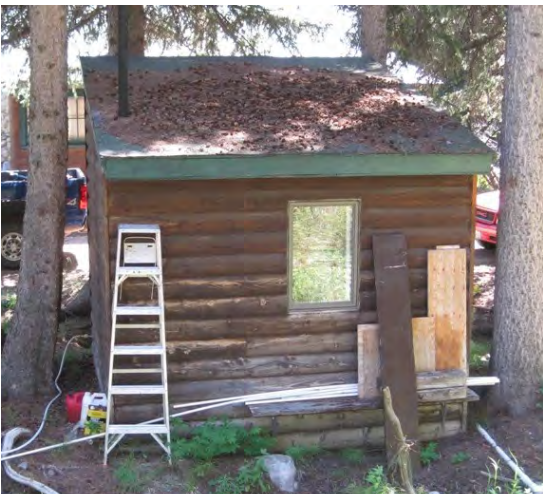
Most of these little things that matter have been in previous newsletters. They are in this issue to refresh your memory, and introduce them to new readers.



← Great Grandpa made this three-plex birdhouse. It's now filled with grass and twigs that would be quickly ignited by flying embers.



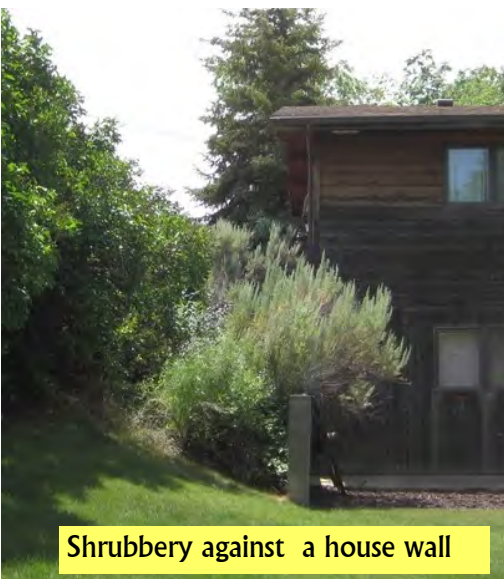
This wide crack in a old and dried porch railing is an ember trap.



Utility shed with forest litter on the roof, and combustibles against unsealed walls.



Flammable tree needles under the eaves by a chimney.



Shrubbery against a house wall



Combustible material under a porch/deck.

A foundation vent with screen larger than the recommended 1/8-inch mesh →



OLD MAID GULCH HAZARDOUS FUELS TREATMENT

The 6.5 acre Old Maid Gulch Fuels Treatment project inside the Canyon Creek Village subdivision was recently completed. Project work included thinning a juniper stand to 15 foot spacing (25 feet on slopes) to reduce potential wildfire intensity and rate of spread. In the process, trees were pruned, shrubs were cut, and the cut shrubs and thinning and pruning slash were piled and burned. This \$8,000 project was paid for with \$4,000 of Washakie County Firewise cost-share funds, and \$4,000 of Homeowner’s Association funds and in-kind contribution.



BEFORE FUELS TREATMENT



SAME LOCATION AFTER TREATMENT



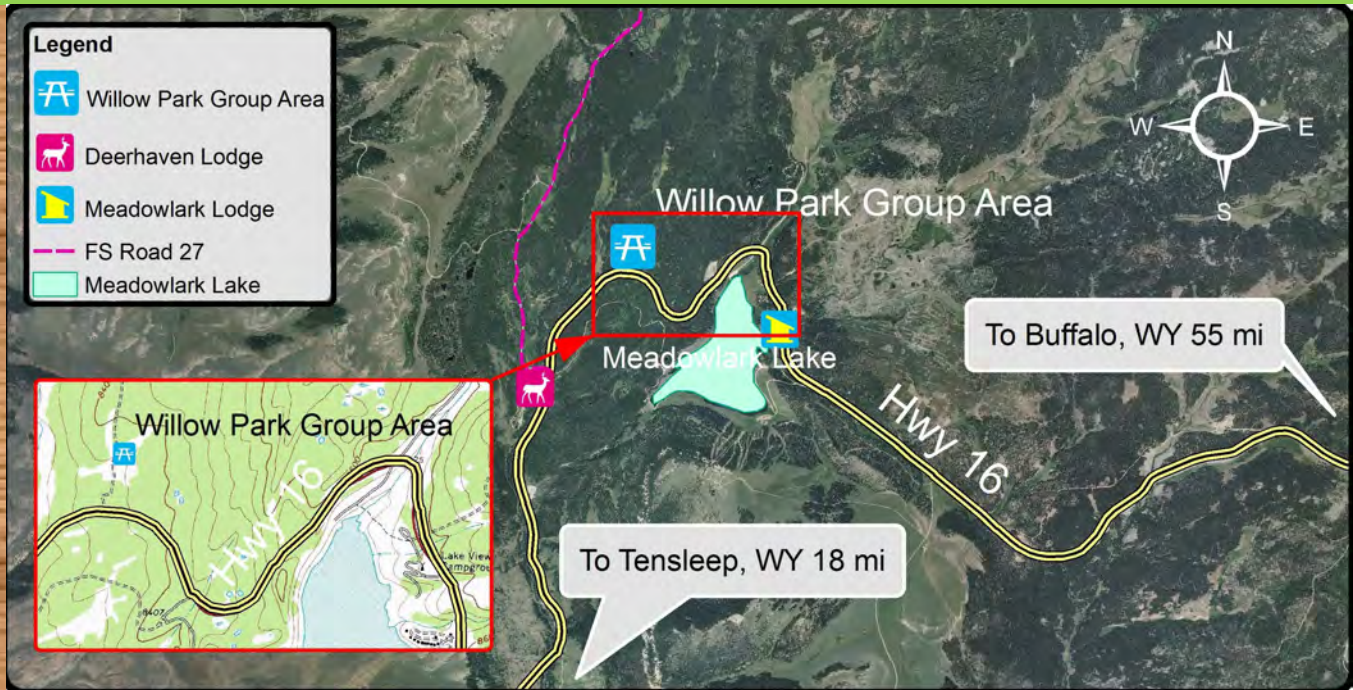
AFTER TREATMENT COMPARISON. THE FOREGROUND WAS TREATED, THE BACKGROUND WASN'T.



AFTER TREATMENT NEAR HOMES

Bighorn Mountain Cabin Firewise Picnic

Sunday June 28, 2015, at the Willow Park Group Area



All Bighorn Mountain home and cabin owners are invited to attend. **RSVPs are requested.** Get them to Firewise@wytfs.com, or George Wynn at [307-921-2847](tel:307-921-2847)

What: Annual Bighorn Cabin-Owners Firewise Picnic **Date:** Sunday June 28, 2015

Time: 10:30 am to 3:00 pm—(see agenda below)

Place: Willow Park Group Area, Bighorn National Forest

Agenda:

10:30 am to 11:30 am—West Ten Sleep Creek Cabin Owner's Association meeting.
(Contact **Tom Schultz** for more information **(307) 587-6122.**)

11:30 am to 12:30 pm – Lunch barbeque (food and beverages provided –See below).

12:30 pm to 1:30 pm – Updates by the Forest Service, Washakie Fire Warden, and Big Horn and Washakie Firewise. Other presentations are likely.

1:30pm to 3:00 pm— Tour of West Ten Sleep Project forest management activities; completed cabin home ignition zones; examples of cabins needing treatments; other activities/presentations to be determined.

3:00 pm - Adjourn

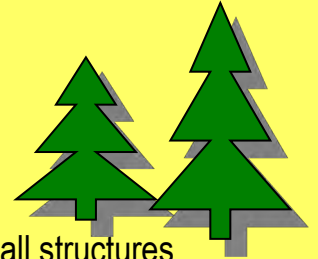
Lunch provided courtesy of Washakie County Firewise and the West Tensleep Creek Cabin Owners Association. For more information contact the County Firewise Coordinator at: (307) 921-2847 or Email: Firewise@wytfs.com

ANNUAL PRE-FIRE-SEASON FIREWISE WALK-AROUND CHECKLIST

Once a home or cabin has been made Firewise, the owner can't sit back and enjoy it. Vegetation will continue to grow, and human activities will change the situation on an irregular basis.

BEFORE FIRE SEASON:

- ___ Remove leaves and forest litter from gutters, roofs, and within 3 feet of all structures
- ___ Clean chimney screens
- ___ Cut new small trees and shrubs within the 100-foot zone
- ___ Remove dead trees within the 100-foot zone
- ___ Check your address placard or sign for clear visibility
- ___ Move your conveniently-placed winter woodpile to more than 30 feet from all structures
- ___ Check/replace the batteries in your emergency alert radio
- ___ Inspect your powerline for branches within four feet in all directions
- ___ Check window screens for a tight fit, and patch any holes
- ___ Remove leaf and needles between the boards of decks, and under any decks and porches.
- ___ Check walls and foundation for fresh bird and animal holes, and patch appropriately
- ___ Pick up winter-broken limbs within the 100-foot zone
- ___ Remove flammable materials from decks and porches, except when actually in use
- ___ Review your evacuation plan, and share it with the family and guests
- ___ If you are interested in keeping current on wildfire activity in Wyoming or the country, check out the websites mentioned below, and move them to your computer's "Favorites" list.



BEFORE GRASS CURES IN MID-SUMMER:

- ___ Mow grassy areas around all structures
- ___ Mow grass within and adjacent to driveways



From the International Association of Fire Chiefs

WEBSITES FOR TRACKING WILDFIRE ACTIVITY

FOR FIRES IN WYOMING:

<http://lands.state.wy.us>

Then click on - Forestry : Wildland Fire Management and then Fire Information

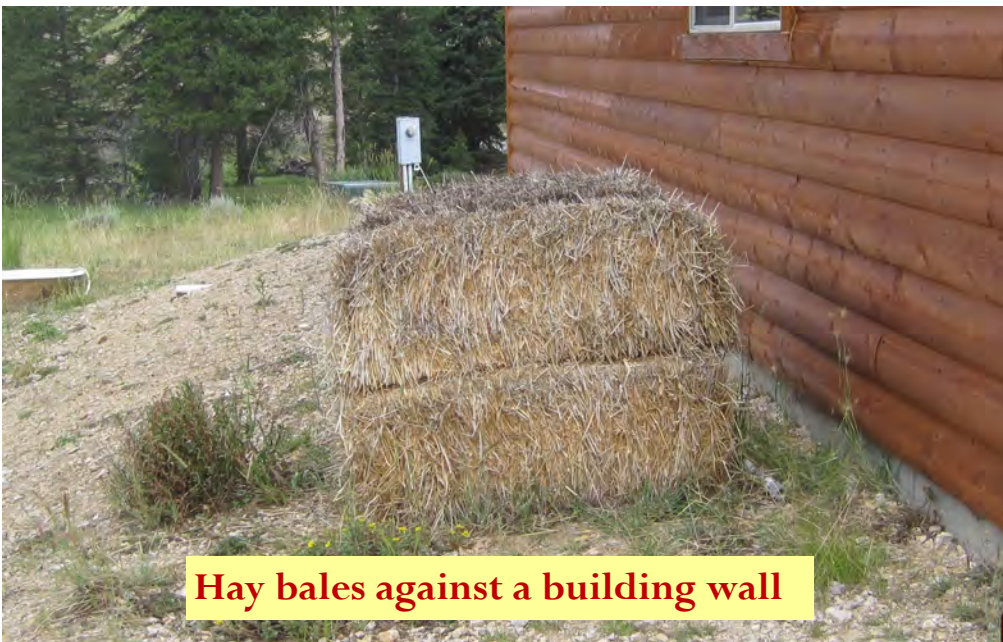
FIRE ACTIVITY FOR THE ENTIRE COUNTRY:

www.inciweb.org

Big Horn/Washakie Firewise
6628 W. Riverside Drive
Casper, Wyoming 82604



MORE LITTLE THINGS THAT MATTER



Hay bales against a building wall



08/02/2014

That little forgotten weed patch behind the garage

You can now keep up on daily news and events with Bighorn Basin Firewise. Go to: <https://www.facebook.com/bighornbasin.firewise>